



**Cable ID: LCU5-11CU-0100-S**

Test Limit: TIA Cat 5e Perm. Link

Limits Version: V7.4

Date / Time: 10/17/2024 12:56:11 PM

Headroom 9.9 dB (NEXT 1,2-7,8)

Cable Type: Cat 5e U/UTP

NVP: 69.0%

Main: Versiv

S/N: 1944019

Software Version: V6.4 Build 4

Calibration Date: 04/02/2024

Adapter: DSX-8000 (DSX-PLA804)

S/N: 22420161

**Test Summary: PASS**

Remote: Versiv

S/N: 1944025

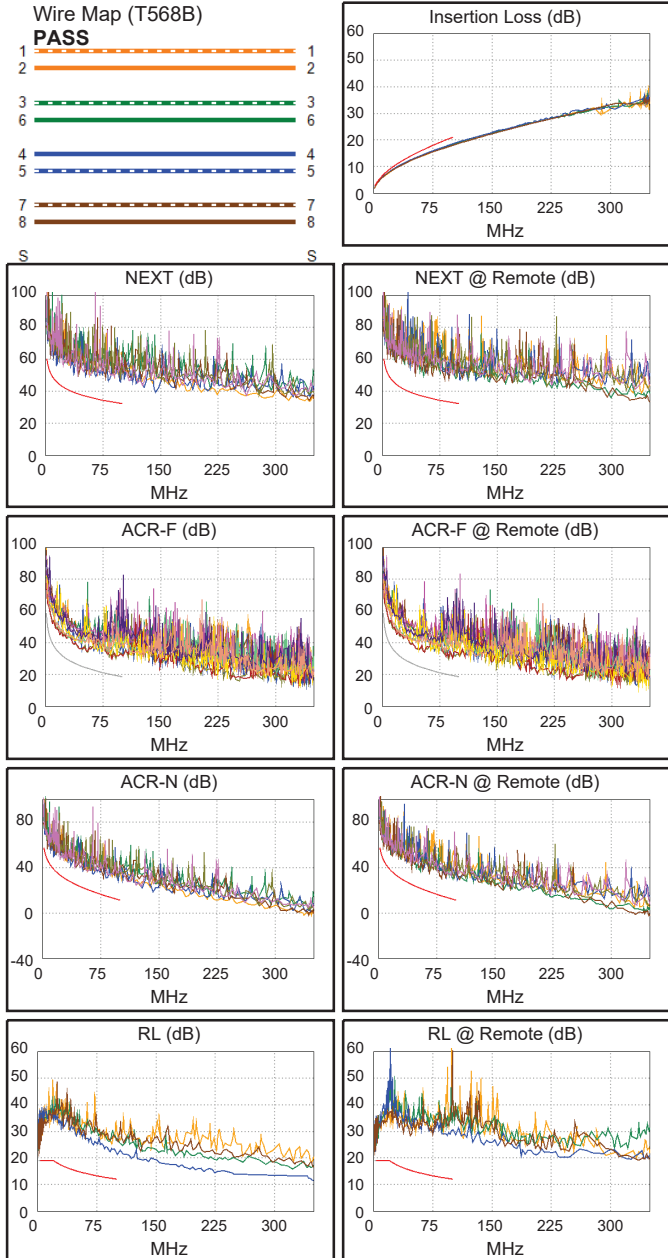
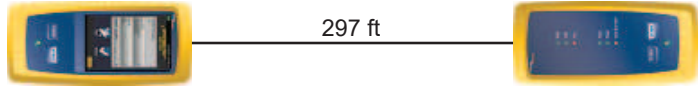
Software Version: V6.4 Build 4

Calibration Date: 04/02/2024

Adapter: DSX-8000R (DSX-PLA804)

S/N: 22420162

Length (ft), Limit 295	[Pair 1,2]	297
Prop. Delay (ns), Limit 498	[Pair 3,6]	456
Delay Skew (ns), Limit 44	[Pair 3,6]	18
Resistance (ohms)	[Pair 3,6]	17.40
Insertion Loss Margin (dB)	[Pair 4,5]	2.5
Frequency (MHz)	[Pair 4,5]	100.0
Limit (dB)	[Pair 4,5]	21.0



Worst Case Margin Worst Case Value

PASS	MAIN	SR	MAIN	SR
Worst Pair	1,2-7,8	3,6-4,5	1,2-7,8	3,6-4,5
<b>NEXT (dB)</b>	9.9	11.6	13.5	13.0
Freq. (MHz)	14.6	6.4	98.0	81.0
Limit (dB)	45.9	51.6	32.4	33.8
Worst Pair	1,2	4,5	7,8	4,5
<b>PS NEXT (dB)</b>	12.5	13.5	14.1	14.3
Freq. (MHz)	14.6	6.4	97.8	86.8
Limit (dB)	42.9	48.6	29.5	30.3

PASS	MAIN	SR	MAIN	SR
Worst Pair	4,5-3,6	3,6-4,5	3,6-4,5	3,6-4,5
<b>ACR-F (dB)</b>	9.3	9.2	10.2	9.7
Freq. (MHz)	43.3	43.3	92.3	86.5
Limit (dB)	25.9	25.9	19.3	19.9
Worst Pair	3,6	4,5	4,5	4,5
<b>PS ACR-F (dB)</b>	11.7	11.0	13.0	11.8
Freq. (MHz)	43.3	43.3	92.3	86.3
Limit (dB)	22.9	22.9	16.3	16.9

N/A	MAIN	SR	MAIN	SR
Worst Pair	1,2-7,8	3,6-4,5	1,2-7,8	1,2-4,5
<b>ACR-N (dB)</b>	10.7	12.0	16.4	17.8
Freq. (MHz)	14.5	6.4	98.0	96.0
Limit (dB)	38.4	46.7	11.7	12.1
Worst Pair	1,2	4,5	7,8	4,5
<b>PS ACR-N (dB)</b>	13.3	13.9	17.1	16.6
Freq. (MHz)	14.5	6.4	97.8	87.0
Limit (dB)	35.4	43.7	8.7	10.9

PASS	MAIN	SR	MAIN	SR
Worst Pair	7,8	4,5	4,5	4,5
<b>RL (dB)</b>	7.8	7.5	10.0	7.5
Freq. (MHz)	3.6	2.8	100.0	2.8
Limit (dB)	19.0	19.0	12.0	19.0

Compliant Network Standards:  
 10BASE-T      100BASE-TX      100BASE-T4  
 1000BASE-T    2.5GBASE-T      ATM-25  
 ATM-51        ATM-155          100VG-AnyLan  
 TR-4           TR-16 Active      TR-16 Passive